



WACONIA PKWY N CLOSED DATE TO DATE ELECTRONIC MESSAGE BOARD

WACONIA PKWY N CLOSED DATE TO DATE ELECTRONIC MESSAGE BOARD

ROAD CLOSED TO THRU TRAFFIC

DETOUR AHEAD

M4-9M (36 X36) DETOUR

M4-9M (36 X36) DETOUR

M4-9M (30 X24) DETOUR

M4-9M (30 X24) DETOUR

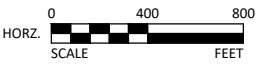
M4-9M (30 X24) DETOUR

M4-9M (30 X24) DETOUR

M4-9L (30 X24) DETOUR

M4-9L (30 X24) DETOUR

© Bolton & Menk, Inc. 2023. All Rights Reserved. W:\WACONIA\OC128366\CAD\CSD\128366050.dwg, 7/18/2023 12:02 PM



RYAN ROJOHNSON 54278 06/14/2023



2638 SHADOW LANE, SUITE 200 CHASKA, MINNESOTA 55318 Phone: (952) 448-8838 Email: Chaska@bolton-menk.com www.bolton-menk.com

DESIGNED	NO.	ISSUED FOR	DATE
CAL/APA			
DRAWN			
SCD/CAL			
CHECKED			
RRJ			
CLIENT PROJ. NO.	OC1.128366		

CITY OF WACONIA WACONIA PARKWAY NORTH CULVERT IMPROVEMENTS TRAFFIC CONTROL MAP

SHEET C4.02